

Mahere Taiohi: Reo, Hautūtanga, Mahi

Ka kōkiri huringa te Mahere Taiohi i roto i te Rautaki Oranga Tamaiti me te Taiohi (CYWS). Ko te uaratanga a te CYWS ko Aotearoa **"te wāhi pai rawa i te katoa mō ngā tamariki me ngā taiohi."**

Ka kōkiri mahi te Mahere Taiohi i raro i te wāhanga putanga CYWS: **"Kei te whai wāhi mai ngā tamariki, ā, kei te whakamanatia."**

E toru ngā tuinga tūhonohono o te Mahere Taiohi: **he anga rautaki, he rārangi mahi, me tētahi anga inenga.**

Ngā whāinga o te Mahere Taiohi

Kei te whakarongohia, kei te uarahia, ā, kei te whakaūngia ngā reo me ngā whakaaro o ngā taiohi ki ngā whakatau tikanga i ngā taumata katoa. Kei te hīkina te mana o ngā taiohi. Ka whakamanatia ngā taiohi ki te ārahi i ō rātau ao, kia kitea, kia uaratia, kia whakaaronuitia ō rātau tuakiri, ā, kia nui haere ō rātau mana i roto i ō rātau hapori, i roto hoki i ngā kaupapahere kāwanatanga.

Ngā wāhi Arotahi

E rua ngā wāhanga arotahi o te Mahere Taiohi: **Te Reo me te Hautūtanga.**

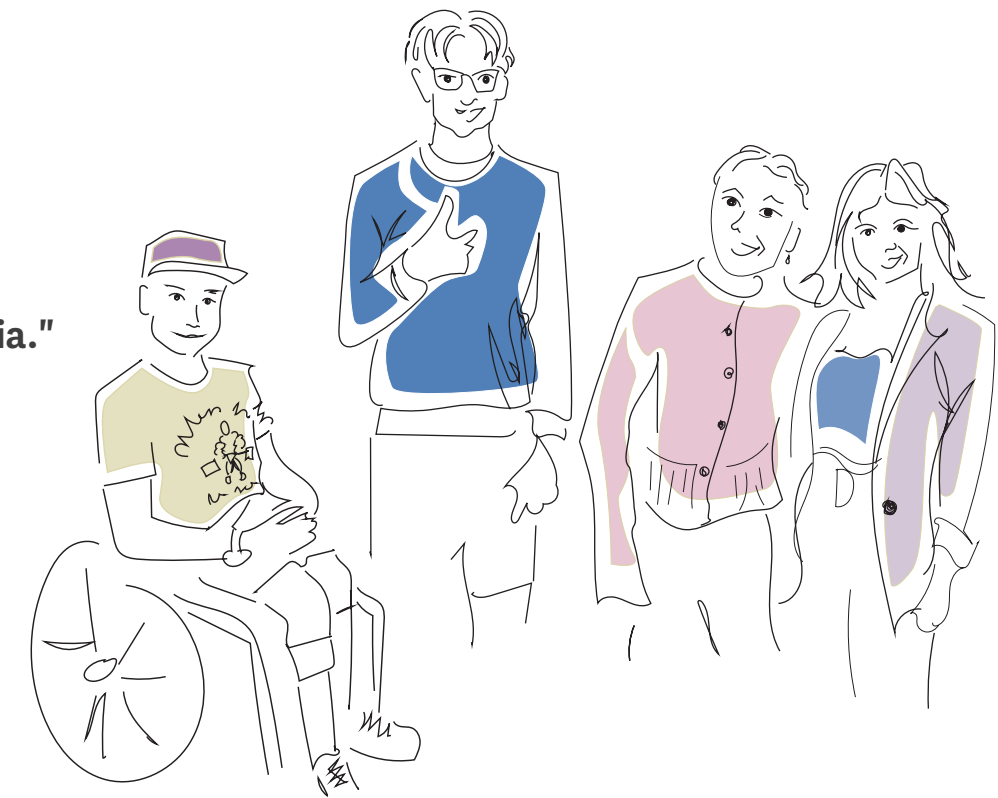
He āhuatanga te Reo me te Hautūtanga nō te whai wāhitanga. He hira ngā taiohi mō te tuku whakaaro, ā, me tuku hoki kia whai wāhi mai me te whai kahawhiri hoki.

Ngā putanga mō ngā taiohi

- E tautokona ana ngā taiohi ki te waihanganga i ō rātau tuakiri me te hiki i ō rātau mana.
- Ka hāpaitia te mauri o ngā tamariki kia kitea, kia āhukahukatia, kia uaratia hoki rātau i te mea ko rātau tērā, ā, kia eke rātau ki tērā e hiahiatia ana e rātau.
- E āhukahukatia, e uaratia ana te whai wāhitanga o ngā tamariki mā ngā whai wāhitanga mō rātau ki te tuku i ō rātau reo, hautūtanga hoki.
- He whai wāhitanga ō ngā taiohi i roto i ngā rōpū matua ki te whakatinana huringa e ai ki a rātau anō.
- E tautokona ana ngā taiohi i roto i te mātauranga, whai mahi, whakangungu hoki, me te whai tautoko mai i ngā whānau, hapori, kāwanatanga hoki.
- Kei te nui haere ake ngā whai wāhitanga e tukuna ana ki ngā taiohi i roto i ngā tūranga kaihautū me te whakatau tikanga ōkawa, pērā i ngā rōpū tohutohu me te mana whakahaere.

"Kei te hiahia mātau kia nui ake ngā whai wāhitanga mō te ārahi engari kei te hiahia tautoko mātau, ngā tohutohu, ā, kia mārama mai ngā pakeke me te tuku wāhanga ki te ārahi e ai ki tā mātau ka whakarite ai."

Kaiwhakautu Rangatahi Whakahōu i te Mahere Taiohi



He tata ki te 850,000 ngā taiohi, mai i te 12-24 tau, e noho ana i Aotearoa.

Ngā kaiwhakamana hira

- E uaratia ana te whai wāhitanga o ngā taiohi e ngā tari kāwanatanga katoa.
- E mārama ana ngā tari kāwanatanga me te whai i te Mana Taiohi ina kōrerorero ana ki ngā taiohi.
- Ka auaha, ka mahi tahi ngā tari kāwanatanga tētahi ki tētahi me ngā hoa rāngai taiohi hapori hei tautoko i te reo me te hautūtanga o ngā taiohi.
- Ka tuku rawa ngā tari kāwanatanga me te tautoko i te rāngai taiohi me ētahi atu whakahaere hapori e tautoko ana i ngā taiohi me ngā mahi taiohi me ētahi atu ratonga taiohi.
- He rite tonu te tuari a ngā tari kāwanatanga tētahi ki tētahi i ā rātau akoranga i roto i ngā kōrerorero tahi, ā, ka mahi tahi ina taea hei whakaiti i te ngenge o ngā whakawhitihiti kōrero.
- Kei te āta rongohia ngā reo o ngā taiohi, kei te hopukia, ā, kei te whaiwhaitia i roto i ngā mahi a te kāwanatanga.
- Ka nui ake te reo o ngā rōpū matua i roto i te kāwanatanga.

Ko te Mahere Taiohi mō ngā taiohi 12-24 tau, e arotahi ana ki ngā aropā matua e whitu.



Taiohi Māori



Taiohi o Te Moananui-a-Kiwa



Taiohi Rainbow



Taiohi Hauā



Ngā taiohi wāhine



Ngā taiohi e noho ana i roto i ngā rohe



Ngā taiohi nō ngā hapori mātāwaka
(otirā ngā rerenga o mua me ngā kaiheke o nā tata nei)



MINISTRY OF
YOUTH DEVELOPMENT
TE MANATŪ WHAKAHIATO TAIOHI
Administered by the Ministry of Social Development

Te Kāwanatanga o Aotearoa
New Zealand Government

Ngā utauta kei roto i tā mātau kete mō te hoahoa me te whakatinana i ngā mahi o te Mahere Taiohi

Hei whakatutuki i ngā whāinga o te Mahere Taiohi, ka hoahoatia ngā mahi, ā, ka whakahaerehia e ngā tari kāwanatanga, te rāngai taiohi, me ngā pātui rāngai hapori. E whā ngā utauta hira me whakamahi ina hoahoa me te whakatinana i ngā mahi. E wātea ana ngā mōhiohio atu anō me ngā rauemi ki te paetukutuku a **Te Manatū Whakahiato Taiohi (MYD)**.

Mana Taiohi

He anga ā-mātāpono a Mana Taiohi e whakamōhio ana i te āhua o te mahi tahi a te tangata me te taiohi i Aotearoa me tētahi tirohanga ao Māori. I takea mai a Mana Taiohi i ngā mātāpono whānui o te Mana, me ngā mātāpono tūhonohono, matawhānui e waru:

- Mauri
- Whakapapa
- Hononga
- Te Ao
- Manaakitanga
- Whai Wāhitanga
- Mātauranga
- Whanaungatanga.

Ko ngā mātāpono tuatahi e whā o te Mauri, Whakapapa, Hononga, me Te Ao he mana kei te taiohi. Ko ngā mātāpono tuarua e whā o te Manaakitanga, Whai Wāhitanga, Mātauranga, me te Whanaungatanga e whakaatu i te āhua o te āwhina a te whanaketanga taiohi ki te hiki i te mana.

He torowhānui ngā mātāpono o Mana Taiohi, e whirinaki ana tētahi ki tētahi, ā, he kaha ake ina tūhono ana tētahi ki tētahi. Ki te kore tētahi, ka ngoikore ake etahi atu.

Ko te mātāpono o te Mana e kīia ana ko "te mana ka riro mai i te whānautanga mai, ā, ka riro mai i tō tātau ora. He whakarite i te āhei o te tangata ki te whai kahawhiri i ō rātau ao me ngā whakatau e whai pānga ana ki a rātau. E tautokona ana ngā taiohi kia whai reo, kia whakamahi i ō rātau kaha, me te ārahi".

E āhukahuka ana ēnei mātāpono i te mana kei te taiohi, ā, me pēhea e mahi ai ki te hiki i taua mana mā te reo me te hautūtanga. Mai i tēnei ka taka mai te Whai Wāhitanga. He whakarite te Whai Wāhitanga i te āhei o te tangata ki te whai kahawhiri i tōna ao me ngā whakatau e whai pānga ana ki a ia.

I roto i te horopaki o te Mahere Taiohi, me puta i ngā kōrerorero tahi me ngā taiohi ngā wāhi haumarua e taea ai e ngā taiohi te whakaputa i tō rātau reo, kia rongohia, me te whakaawe whakatau. Ko te Whai Wāhitanga ko te whakauru mai i te hunga taiohi ki ngā whakatau tikanga i roto i ngā āhuatanga katoa o ō rātau ao. Ka āhukahuka tēnei aronga i te wāhanga o te whai wāhitanga mai hei waka mō te whanaketanga taiohi pai me te whakaara i te whai wāhitanga kia puta ai ngā tūmomo putanga pai whānui e tautoko ana i te oranga.

Ngā Aropā Matua

He nui ake te mōrea ki te oranga ka pā ki ētahi rōpū taiohi, e ai ki ngā āhuatanga pērā i tō rātau mātāwaka, hōkakatanga, tuakiri ira tangata, hauātanga, me te rohe ake. He uaua ki te maha o ēnei taiohi te toro ki ngā ratonga tautoko, hei tauira, ngā ratonga rata ki ngā tikanga ahurea, he tomopai, ka whai whakaaro mai, ā, he whakaū i te ira tangata.

Ka arotahi te Mahere Taiohi ki ngā aropā matua e whitu. Arā ko te:

- Taiohi Māori
- Taiohi o Te Moananui-a-Kiwa
- Taiohi Rainbow
- Taiohi Hauā
- Ngā taiohi wāhine
- Ngā taiohi nō ngā hapori mātāwaka (otirā ngā rerenga o mua me ngā kaiheke o nā tata nei)
- Ngā taiohi e noho ana i roto i ngā rohe.

Ehara i te mea he rōpū rerekē ngā aropā matua, ā, he maha ngā taiohi nō ngā rōpū maha, me ngā tuakiri whakawhitiwhiti e puta ake ai ngā wheako ahurei. Ina waihanga ana i ngā mahi, me whai whakaaro ki tēnei uauatanga.

He mea nui kia maumahara, i roto hoki i ia aropā, he rerekē ngā wheako takitahi. Ko ngā kupu pērā i te 'mātāwaka', 'rainbow' rānei he mea waiwai hei kōrero whānui i hopu ai i ngā ia whānui, engari kāore he wheako ōrite kotahi i waenga i ngā tāngata katoa i roto i ēnei rōpū. Hei tauira, kei roto i ngā taiohi mātāwaka ko te hunga i whānau mai i Aotearoa, rātau i heke mai, me ngā rerenga i wehe mai nā ngā raruraru, e whai ana rātau katoa i ngā ara rerekē, ā, nō ngā wehenga rōpū o ngā taupori rerekē.

Me mātua whakaū ngā mahi me ngā inenga i ngā whakamāramatanga kanorau o te reo, me te kaiārahi. Me mātua aro hoki ki ngā aropā matua i te taha o ngā whakautu hāngai hei whakarite i ō rātau hiahia ahurei. E kore e puta ā-rōpū ngā ihu o ngā taiohi mēnā ka mahue te hunga kei te noho mōrea ki muri.

Awhe Pakeke

Ko te Mahere Taiohi mō ngā taiohi 12-24 tau. Ka taea tēnei aropā whānui ake te wehe kia rua ngā rōpū e ai ki ngā wāhanga whanaketanga noa; ngā taiohi 12-17 tau, me ngā taiohi 18-24 tau.

He ārahi arowhānui noa ēnei awhe taipakeke mā ngā tari kāwanatanga me ētahi atu e waihanga ana i ngā mahi mō te Mahere Taiohi. Me kī, kei roto te aropā 12-17 tau i te mātauranga e mahi ana, ā, ko te aropā 18-24 kāore e kore kei te puta haere ki te whai ao, ā, kāore i te whāiti ki: te whakauru ki te ohu mahi, te whai mātauranga atu anō, te wehe i te kāinga rānei.

He tino rerekē ngā wheako i roto i ia aropā. Kāore i te ū ngā taiohi ki ngā tohu nui ōrite, e ōrite rānei te ara kia puta ki te whai ao ki te ao mārama. Ko te taipakeke, wāhanga whanaketanga, horopaki, matatau, me ngā tika ā-ture ngā āhuatanga katoa me whakaaroaro. Hei tauira, kāore e hāngai ngā tika me ngā hiahia i ngā wā katoa o tētahi tamaiti 12 ngā tau ki ērā o tētahi taiohi 17 ngā tau. Waihoki, he maha ngā taiohi ka wehe i te kura, ka kuhu rānei ki te mahi i ngā wāhanga rerekē. Me whai whakaaro te hunga waihanga mahi mēnā me hāngai ake ā rātau whāinga ki tētahi awhe taipakeke tauwhāiti ake, heipū ake rānei.

He mea nui te kōrerorero tahi ki ngā rōpū taipakeke tika ina waihanga mahi ana kia whaitake ai te whakarite i ō rātau hiahia. He hira ngā kitenga a ngā taiohi, ā, he tino mōhio rātau ki ō rātau ake wheako. Me āhukahuka ngā tari me ngā whakahaere kāwanatanga he whai tikanga ngā reo me ngā whakaaro o ngā taiohi o ngā taipakeke katoa.



Te Rārangi Auroa o te Kōrerorero Tahi

Kei roto i te rārangi auroa o te kōrerorero tahi ko ngā taumata kōrerorero tahi rerekē. Ko te taumata tuatahi ko te whakamōhio atu: ka tukuna ngā mōhiohio taurite me te tōkeke ki ngā taiohi mō ngā take, ngā huringa e pā ana ki a rātau. Ko te taumata tuarua ko te whakawhitiwhiti kōrero: ka tukuna ngā whai wāhitanga ki ngā taiohi ki te whakaputa whakaaro me te tuku whakaaro ki ngā whakatau. Kei te taumata tuatoru ko te whakauru mai: ka uru mai ngā taiohi ki te tautuhi me te whakaahua i ngā take e kaingākau ana ki a rātau, ā, ka uru atu rānei ki te tautuhi kōwhiringa me te whakarite i ēnei take. Ko te taumata tuawhā he mahi tahi: ka āta rapua ngā tohutohu me ngā whakaaro o ngā taiohi me te whakauru atu ki ngā whakatau whakamutunga me ngā mahi. Ko te taumata tuarima ko te whakamana: he kaiwhakatau tikanga hira ngā taiohi, ā, he hira rātau mō te whakatinana i ngā mahi.

E whakatenatenahia ana ngā tari kia whakaaroarohia te taumata e hiahia ana rātau ki te kōrerorero tahi ki ngā taiohi. Kei roto i tēnei ko te whakaaroaro he aha te taumata o te kōrerorero tahi e tika ana mō ā rātau mahi, te nui o ngā rawa e wātea ana, me ngā putanga e hiahia ana rātau ki te whakatutuki tahi mā ngā rangatahi.

I ngā taumata kōrerorero tahi whakaharahara ake, pērā i te whakamana me te mahi tahi, ka nui ake te reo me te hautū a te hunga taiohi, engari he iti iho te aropā o ngā taiohi. I ngā taumata kōrerorero tahi māmā ake, pērā i te whakawhitiwhiti kōrero, te whakamōhio atu rānei, kāore e kaha ake te reo me te kaihautū a te hautū a te hunga taiohi engari i te nuinga o te wā ka nuiā kē te toro ki ngā taiohi.

Ka rerekē hoki te taumata kōrerorero tahi i ngā wāhi rerekē i roto i te roanga o tētahi mahi. Hei tauira, ka tika ake pea te mahi tahi i te wāhanga hoahoa me te whakamātautau. I te wā whakatinana me te arotake, ka tika ake pea te whakawhitiwhiti kōrero.

I ngā taumata katoa, he mea waiwai te whakawhitiwhiti me te pūrangiaho kia marama tahi ai ki te hōhono me te whānui o te kōrerorero tahi.