

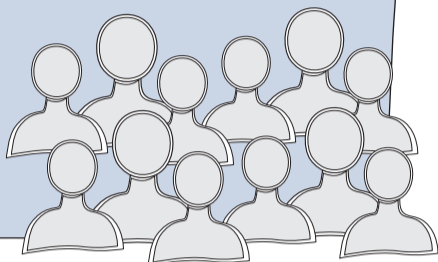
Youth Plan

Turning Voice into Action

1

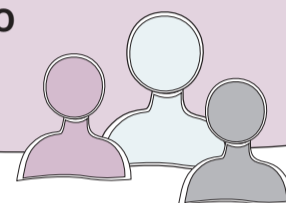
There are approximately
800,000* rangatahi
aged 12-24 years
living in Aotearoa.

*Based on 2018 census



2

The Youth Plan sets out the actions that government will take to support all rangatahi, in all their diversity, to thrive and succeed.



3

There are three focus areas:

- rangatahi voice
- mental wellbeing
- leadership

4

The Youth Plan will help drive the youth-specific outcomes of the Child and Youth Wellbeing Strategy.



5

We are engaging with rangatahi, youth sector providers, philanthropic organisations, iwi and government agencies about the Youth Plan.



6

We also want to hear from rangatahi online. Visit <https://www.surveymonkey.com/r/YouthPlanAotearoa> and tell us what you think.



7

What you say will help to inform the actions for each of the Youth Plan focus areas.



8

We will provide a summary of what we have heard and make this available on www.myd.govt.nz. You can also follow us on Facebook @[ministryofyouthdevelopment](https://www.facebook.com/ministryofyouthdevelopment).

For more information visit www.myd.govt.nz, email mydinfo@myd.govt.nz or call (04) 916 3300 or freephone 0508 FOR MYD (367 693)



MINISTRY OF
YOUTH DEVELOPMENT
TE MANATŪ WHAKAHIATO TAIOHI
Administered by the Ministry of Social Development

New Zealand Government